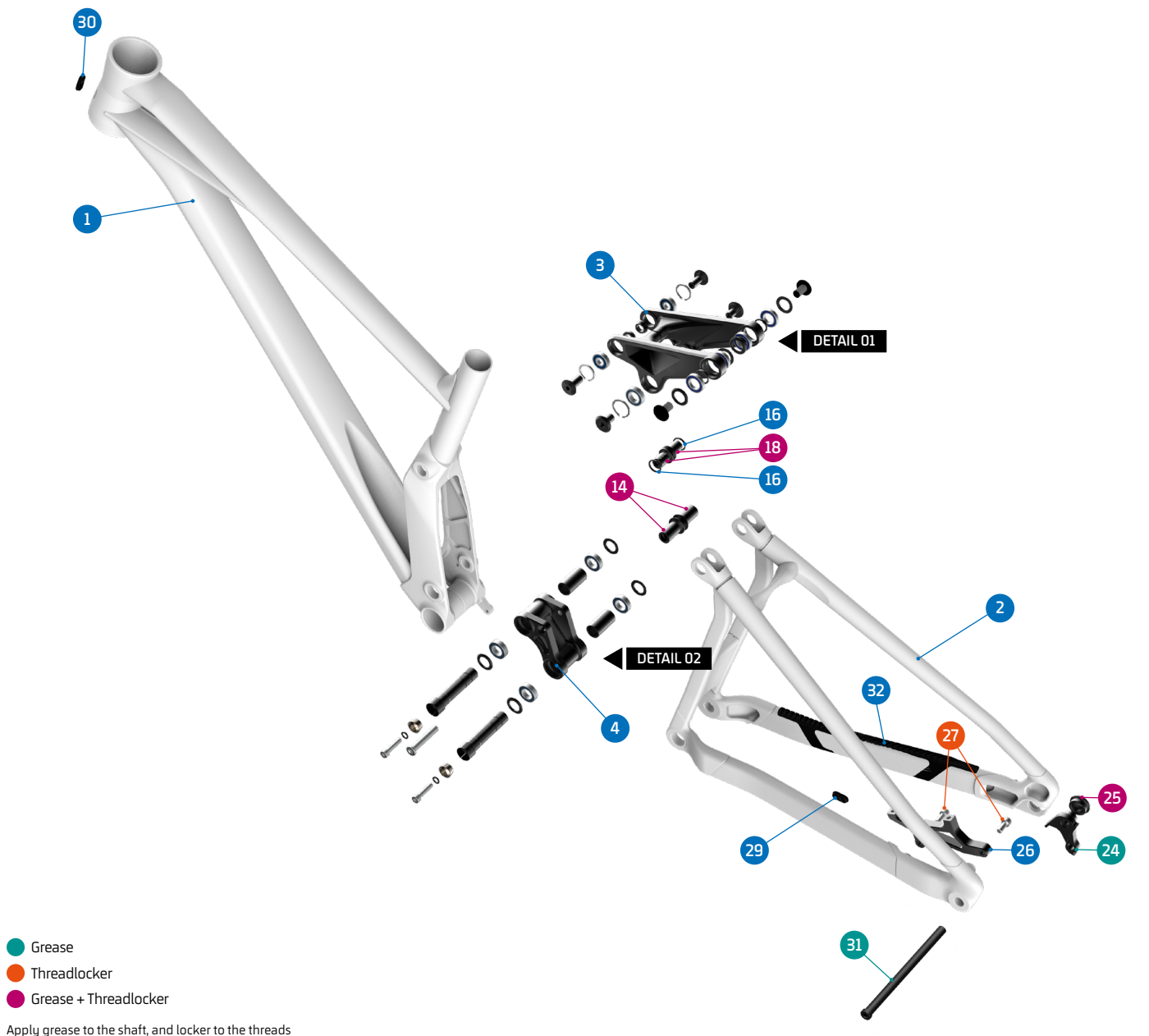


SUMMUM



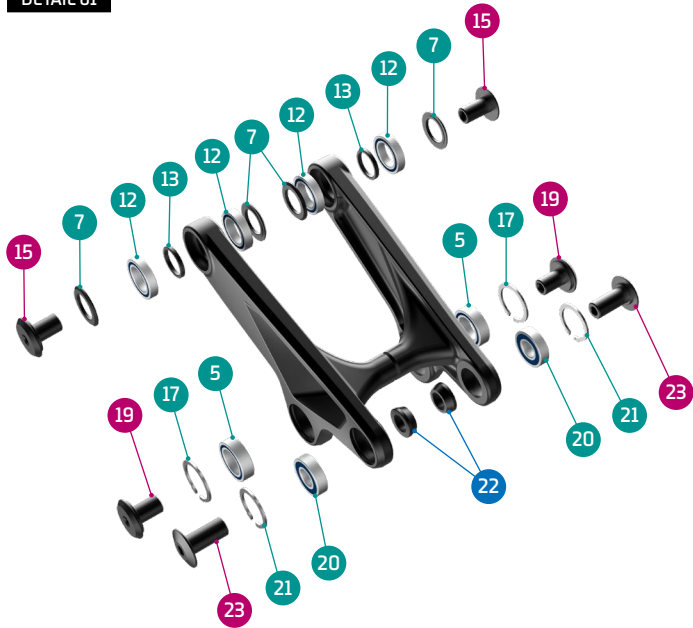
- Grease
- Threadlocker
- Grease + Threadlocker

Apply grease to the shaft, and locker to the threads

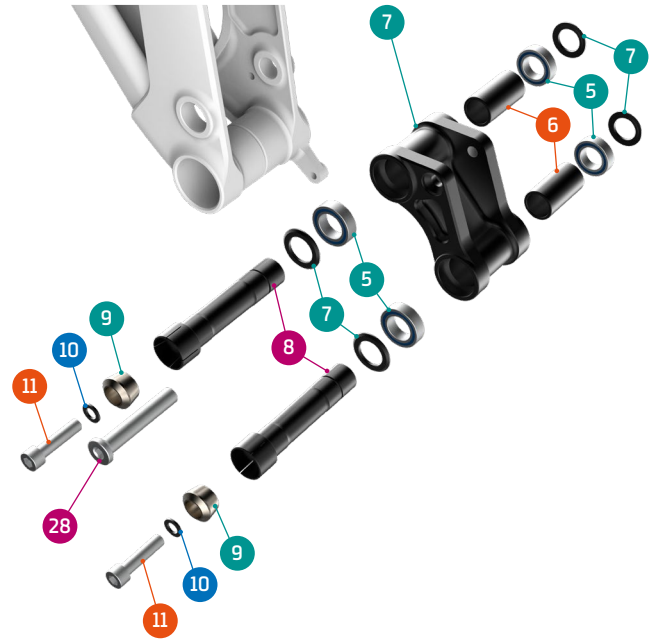
ITEM No.	DESCRIPTION	QTY.	PART NUMBER	TORQUE
1	FRONT TRIANGLE	1		
2	REAR TRIANGLE	1		
3	UPPER LINK	1	099.21017	
4	LOWER LINK	1	099.21011	
5	BEARING, 24X15X7	6	SET 1	
6	SPACER, 37X19X2	2	SET 4	
7	SPACER, 15X27X2	8	SET 3/4	
8	MAIN AXLE, 15X73L	2	SET 4	12Nm
9	TAPER NUT	2	SET 4	
10	SPACER	2	SET 4	
11	SCREW BOLT M6X25	2	SET 4	10Nm
12	BEARING, 24X15X5	4	SET 1	
13	SPACER, 15X19X2.5T	2	SET 3	
14	PIVOT AXLE, 26MM	2	SET 3	12Nm
15	PIVOT AXLE, M12	2	SET 3	12Nm
16	SPACER, 15X19X2T	2	SET 3	
17	C-RING	2	SET 3	

ITEM No.	DESCRIPTION	QTY.	PART NUMBER	TORQUE
18	PIVOT AXLE, 19.5MM	2	SET 3	12Nm
19	PIVOT AXLE, M12	2	SET 3	12Nm
20	BEARING, 10X22X6	2	SET 1	
21	C-RING	2	SET 3	
22	SPACER, 10X17X6	2	SET 2	
23	SHOCK BOLT	2	SET 2	8Nm
24	HANGER	1	SET 5	
25	HANGER NUT	1	SET 5 / 099.16011	4Nm
26	DM BRAKE	1	SET 6	
27	SCREW BOLT M6X15	2	SET 6	8Nm
28	SHOCK BOLT	1	SET 2 / 099.22066	16Nm
29	CABLE RUBBER	1	989.13010	
30	CABLE RUBBER HEAD TUBE	1	099.21044	
31	REAR AXLE MDK 12X157 P1.75 L190 BOLT MAXLE	1	112.90026	
32	CHAINSTAY PROTECTOR	1	099.20017	

DETAIL 01

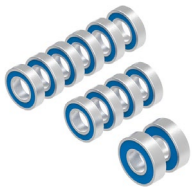


DETAIL 02



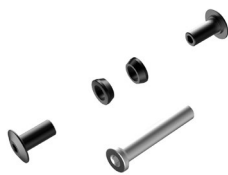
SET 1

ZERO BEARING KIT 23



SET 2

SHOCK HARDWARE KIT 14



SET 3

UPPER LINK KIT 28



SET 4

LOWER LINK KIT 26



SET 5

HANGER M068 + NUT



PART NUMBER	DESCRIPTION	COMPONENTS
099.21100	SET 1: ZERO BEARING KIT 23	BEARING 3802V-2RS, 24X15X7 (x6) / *BEARING 6802V-2RS, 24X15X5 (x4) / BEARING 6900V-2RS, 10x22x6 (x2)
099.21200	SET 2: SHOCK HARDWARE KIT 14	SPACER, 10x17x6 (x2) / SHOCK BOLT (x2) / SHOCK BOLT (x1)
099.21300	SET 3: UPPER LINK KIT 28	SPACER, 15x27x2 (x4) / SPACER, 15x19x2.5T(x2) / PIVOT AXLE, M12 (x2) / SPACER, 15x19x2T (x2) / C-RING (x2) / PIVOT AXLE, 19.5MM (x2) / PIVOT AXLE, M12 (x2) / C-RING (x2) / PIVOT AXLE, 26MM
099.21400	SET 4: LOWER LINK KIT 26	SPACER, 37x19x2 (x2) / MAIN AXLE, 15x73L (x2) / TAPER NUT (x2) / SPACER (x4) / SCREW BOLT (x2)
099.00055	SET 5: HANGER M068 + NUT	HANGER (x1) / HANGER NUT (x1)
099.21018	SET 6: DISC ADAPTOR KIT	DM BRAKE (x1) / SCREW BOLT (x2)
099.21500	GEO KIT SUMMUM 1°-2° HT1.5X112MM	2X HS ADAPTOR-1° 110 / 2X HS ADAPTOR-2° 110